

-Northtree-

-Lying In Sections Nine, Ten And Sixteen, Township Forty Five South, Range Forty Two East-

Being A Replat Of Portions Of Blocks Forty And Forty One, Palm Beach Farms Companys Plat Number Three, Recorded In Plat Book Two,
 Pages Forty Five Through Fifty Four, Inclusive, Public Records, Palm Beach County, Florida

July, A.D., Nineteen Hundred Eighty Six

-A Part Of Boynton West, A Planned Unit Development-

189

State of Florida)

County of Palm Beach)

This Plat was filed for record at _____ day of _____, A.D., 1986, and duly recorded in Plat Book _____ on Pages _____ thru _____.

John S. Dumbler,
 Clerk of the Circuit Court.

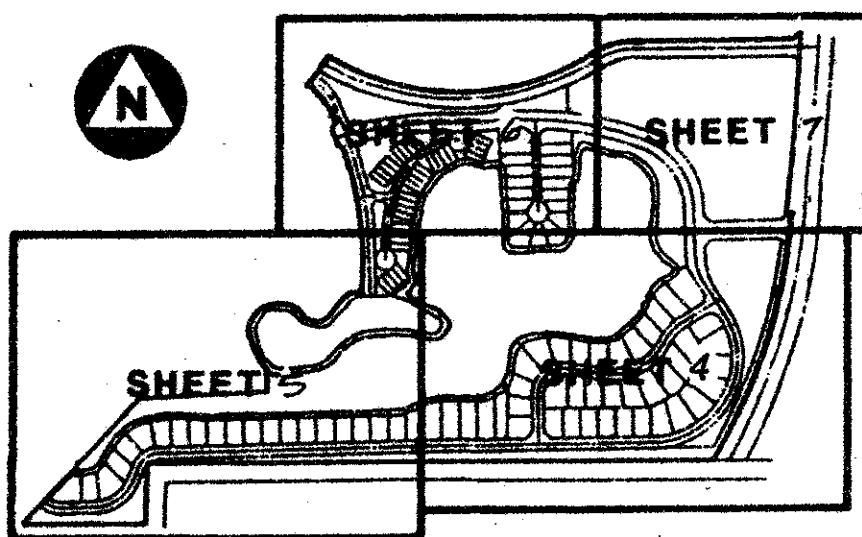
By _____ Deputy Clerk

TA 2 439

9.10.16/4542 Sheet 04 of 07

SUBDIVISION	Northtree
BOOK	56
PAGE	189
FLOOD ZONE	B
FLOOD MAP	185A
ROAD	94-16-49
ZONING	
SE	
ZIP CODE	33404
PUD NAME	Boynton West

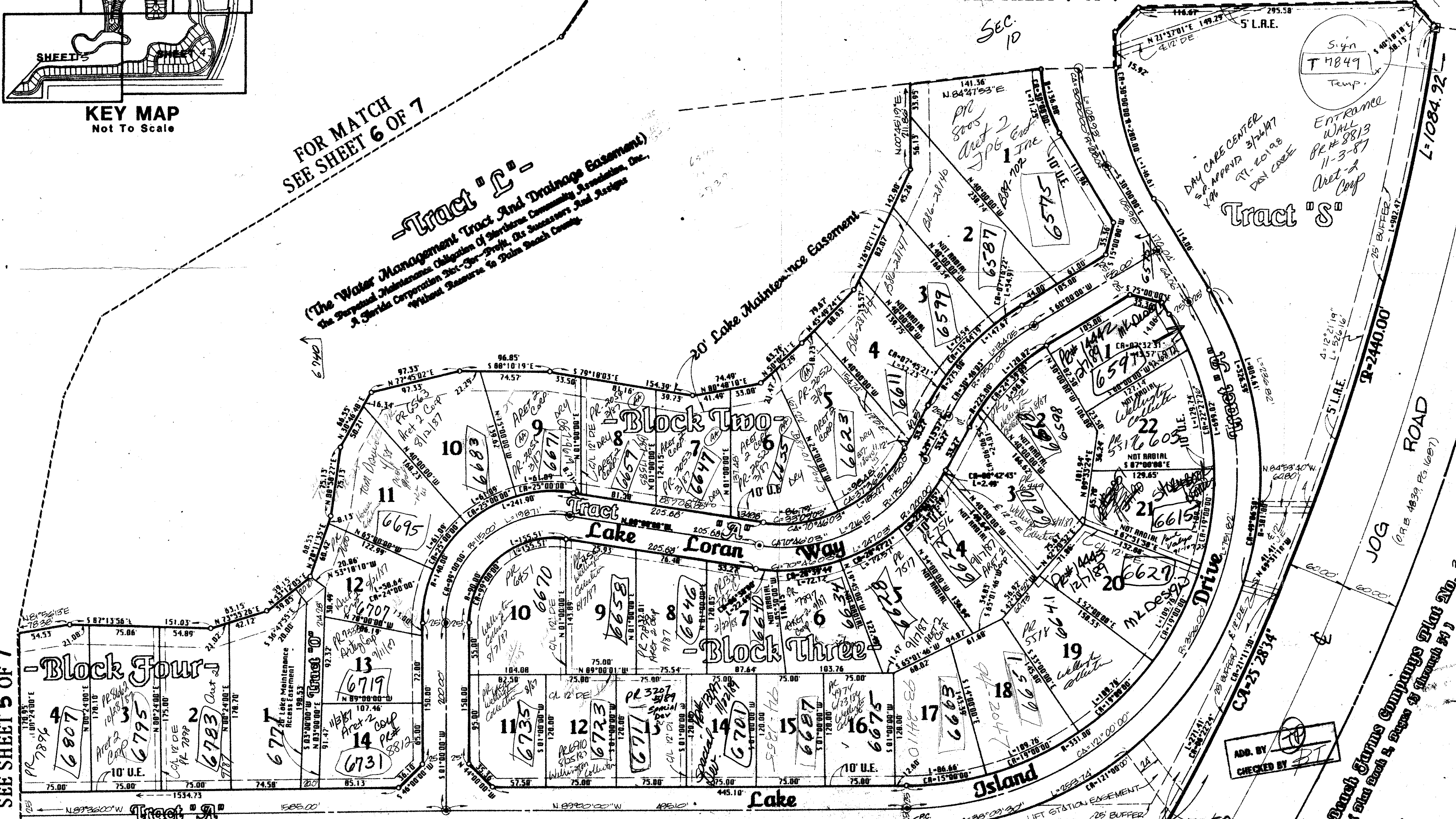
FOR MATCH
 SEE SHEET 7 OF 7



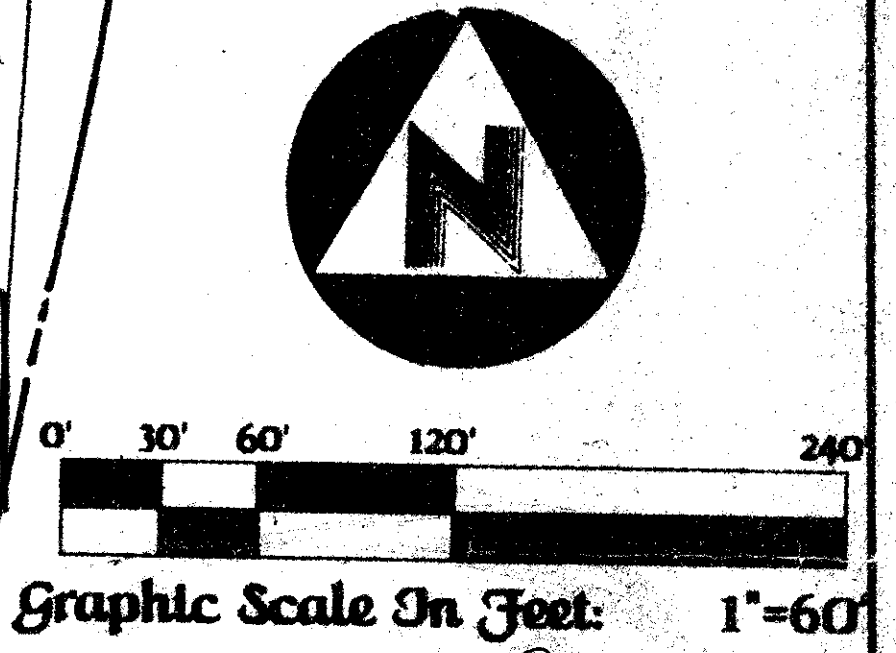
FOR MATCH
 SEE SHEET 6 OF 7

Tract "L"
 (The Water Management Tract And Drainage Easement) of the Proposed Subdivision of Sections 9, 10, and 16, Township 45 South, Range 42 East, Boynton West, A Planned Unit Development, as shown on Plat No. 104442, filed for record July 11, 1983, in Plat Book Two, Pages 45-54, Public Records, Palm Beach County, Florida.

20' Lake Maintenance Easement



Sign
 T 11849
 Temp.
 DAY CARE CENTER
 1400 APPOINTMENT
 11-3-87
 ENTRANCE WALL
 REF. 5813
 11-3-87
 Act & Conf



THIS PAGE ONLY
 S.P. APPEND 10/24/86 EX. 20
 P.D. 5-1 NORTHTREE
 P.D. PER 86-25

Collect
 Pet.
 86-75

Point Of Commencement
 SOUTH QUARTER CORNER
 SECTION 10, T45N, R42E

0490-300
 56/189

This instrument was prepared by Wm. A. Van Campen, R.L.S., in and for the offices of Bench Mark Land Surveying and Mapping, Inc., Four Points Centre, 50 South Military Trail, Suite 200, West Palm Beach, Florida, 33415 (305) 639-2111

BENCH MARK
 land surveying and mapping, inc.

-Record Plat-
-Northtree-

FOR MATCH
 SEE SHEET 5 OF 7

North 89° 36' 00" West 1584.74'

North 89° 00' 00" West 505.10'

South 89° 47' 03" West 270.62'

Lake Worth Drainage District Lateral Canal L-20
 (O.R.B. 5136, P.A. 886)